

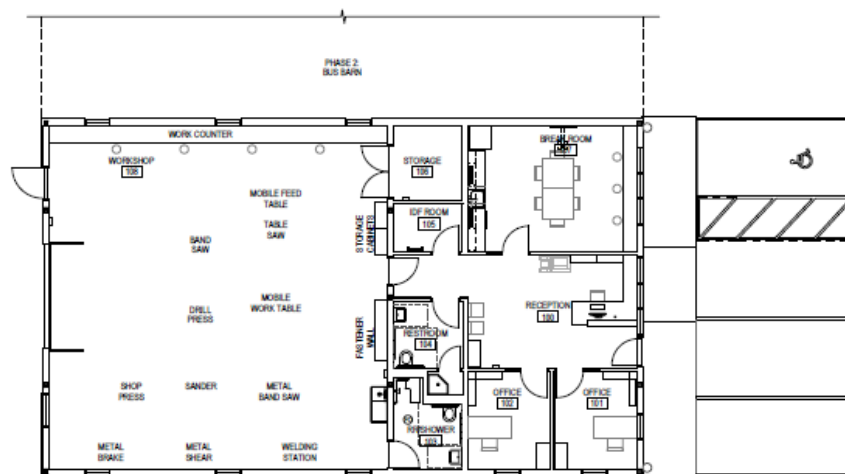
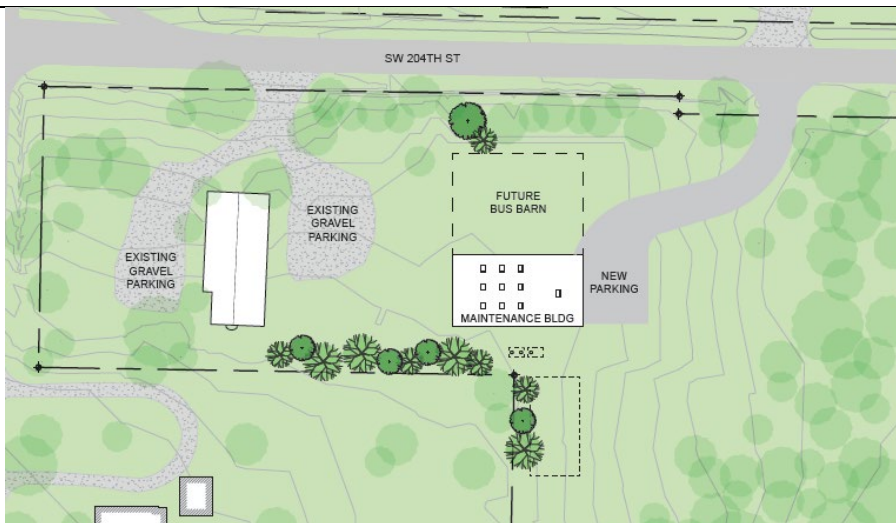
# Vashon Island School District

## Capital Projects Update

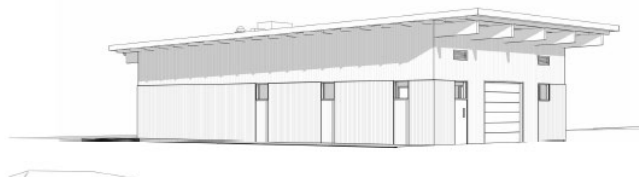
January 23, 2020

| Project   | Status  | Funding                 |
|---|---|-------------------------|
| <b>Chautauqua Elementary</b> – all bond work is complete  |   |                         |
| <b>McMurray</b> – all bond work is complete except for the exterior paint. Options were reviewed with the Board in March of 2019 and the work is on hold. |   |                         |
| <b>Vashon Island High School Track, Field &amp; Grandstands</b>   |   |                         |
| Turf & Track  | Retainage release for Field Turf has been approved and all work complete.<br><br>The last of the equipment budget will be spent towards installing venting into the four new storage containers in the spring/summer of 2020.   | 2017 Bond & KCYFS Grant |
| Gym Maintenance   | All work complete   | Gym Reserves            |
| <b>Vashon Island High School Campus– Other Projects</b>   |   |                         |
| Building K Student Link   | Retainage release process still underway with State agencies.   | 2017 Bond               |
| Heat Pump Repair  | Repairs to the Heat Pump are scheduled for mid-winter break.  | Cap/Tech                |
| <b>Maintenance Shop</b>   |   |                         |
| New Building  | <p>The project advertised for bids on 1.21.20 and bids are scheduled to be opened on 2.25.20. The District anticipates awarding the contract in March, with on-site work beginning in May. Completion is planned by the end of the year. For bid control purposes, a number of alternates have been identified, however, no changes have been made to the site or building plans.</p> <p>The building designed as wood frame post and beam construction, with metal siding and a single slope roof. The shop, associated restroom, storage areas, and mezzanine access are all sealed concrete. The transition between the shop and reception area, along with the break room will be linoleum. Reception and the offices are carpeted. Ceilings in reception and the shop are open to structure with exposed metal ductwork. It is a small but very functional building and a good first step in creating safe and appropriate space for the maintenance activities as well as the future location for the bus maintenance facility.</p> | 2017 Bond               |





Perspective - NW Phase 1



### Perspective - SE Phase 1

### Phase 1 and 2 Elevations



1 Exterior Elevation - North Phase 2  
1/8" = 1'-0"



2 Exterior Elevation - South Phase 2  
1/8" = 1'-0"



1 Exterior Elevation - East Phase 2  
1/8" = 1'-0"



2 Exterior Elevation - West Phase 2  
1/8" = 1'-0"



VI

**Budget**



We continue to track within the overall budget for all projects as of January 23, 2020. Note that all retainage dollars for the various projects are shown as paid, even if they are being held pending State approvals.

